

PRELIMINARY

# KS21i SUBWOOFER



KS21i is the installation version of the KS21 compact reference subwoofer, designed to extend the bandwidth of A15i and A10i systems. KS21i shares identical sonic performance with its touring counterpart but features simplified mounting hardware for greater visual discretion.

KS21i features one high excursion, direct radiating 21" transducer mounted in a bass-reflex tuned enclosure. It operates from 29 Hz to 60 Hz when associated with A15i and from 31 Hz to 100 Hz when associated to A10i. KS21i features L-Vents that substantially reduce turbulence and port noise at high levels to increase LF efficiency.

The KS21i frequency response is optimized to couple perfectly with A15i and A10i systems. Combinations of KS21i and A15i can be flown or stacked via compatible rigging plates. KS21i also integrates a threaded insert to enable pole-mount configurations of A15i or A10i.

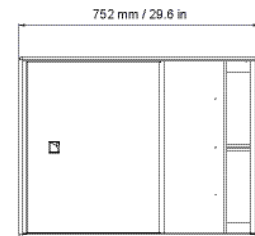
KS21i can be deployed in standard or cardioid configurations with dedicated presets, for flown and stacked deployment.



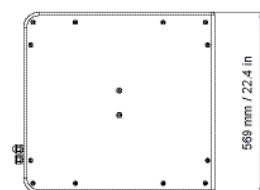
## SPECIFICATIONS

<b>Description</b>	High power compact subwoofer: 1 x 21" amplified by LA4X / LA8 / LA12X
<b>Usable bandwidth (-10 dB)</b>	31 Hz - 100 Hz ([KS21_100])
<b>Maximum SPL<sup>1</sup></b>	138 dB ([KS21_100])
<b>Nominal directivity</b>	Standard or cardioid configurations
<b>Transducers</b>	1 x 21" neodymium cone driver
<b>Acoustical load</b>	Bass-reflex, L-Vents
<b>Nominal impedance</b>	8 Ω
<b>Connectors</b>	4-point terminal block with push-in connection Connector sealing plate with cable gland
<b>Rigging and handling</b>	High grade steel plates four-point rigging system 2 M8 inserts on side panels for A15i yoke bracket 4 M6 inserts on the rear panel for rigging accessories 1 pole mount with M20 x 150 insert
<b>Safety</b>	1 DIN580-compatible M8 insert
<b>Weight (net)</b>	49 kg / 108 lb
<b>Cabinet</b>	Premium grade Baltic beech and birch plywood
<b>Front</b>	Coated steel grill Acoustically neutral 3D fabric
<b>Rigging components</b>	High grade steel with anti-corrosion coating
<b>Finish</b>	Dark grey brown Pantone 426 C Pure white RAL 9010 Custom RAL code on special order

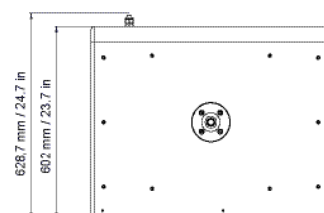
<sup>1</sup>. Peak level at 1 m under free field conditions using pink noise with crest factor 4 (preset specified in brackets).



Front



Side



Top