



dV-SUB

HIGH POWER LF EXTENSION

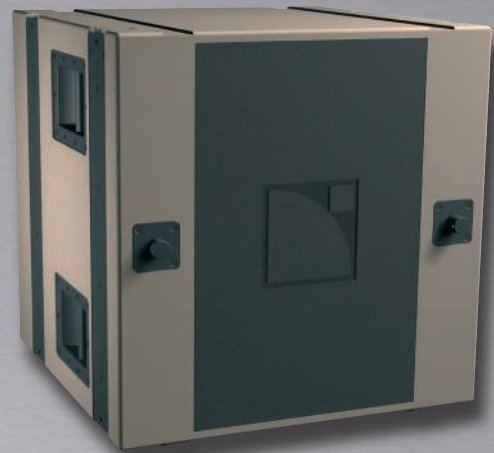
DESCRIPTION

The L-ACOUSTICS® **dV-SUB** is the low frequency extension of the dV-DOSC compact line source array system. Designed for applications requiring maximum low-end impact from a compact enclosure dV-SUB operates from 35 Hz and features a triple 15" speaker configuration assembled in a dual-chamber vented bypass enclosure.

The dV-SUB enclosure generates an omni-directional coverage pattern. The addition of dV-SUB elements within the line source array progressively polarizes the vertical coverage towards the front of the system (the horizontal directivity also increases due to natural dipole effects).

The 4-point rigging system allows flying up to 4 dV-SUB and 12 dV-DOSC. Being entirely compatible with dV-DOSC the line source can be built with a combination of both cabinets utilizing compatible rigging components.

The dV-SUB enclosure is driven by the dedicated L-ACOUSTICS® LA8 amplified controller. The performance of a dV-SUB system combined or not with dV-DOSC depends upon the choice of preset and physical system configuration.



CHARACTERISTICS

Low frequency limit (-10dB)

35 Hz

Nominal directivity (-6dB)

Horizontal: Omni for single element
Polarized in line source

Vertical: Omni for single element
Dependant upon number of elements in line source

Maximum SPL¹ 143 dB ([DV-S_X] preset)

Long term RMS handling capacity

1200 W ([DV-S_X] preset)

Components

3 x 15" weather-resistant transducers
Nominal impedance: 2.7 ohms

Rigging² Components

Steel, certified for: 12 dV-DOSC and 4 dV-SUB (single pick point without extension bar)
9 dV-DOSC and 3 dV-SUB (dual pick point with extension bar)

Physical data

W x H x D: 695 x 708 x 695 mm
27.4 x 27.9 x 27.4 in

Weight (net): 93 kg 205 lbs

Connectors: 1 x 4-pin Speakon®

Material: Baltic birch plywood

Finish: Grayish-brown, RAL 8019®

Front: Polyester-coated steel grill, acoustically neutral foam

Rigging: Polyester-coated steel

Handles: Integrated into the cabinetry

¹ Peak level measured at 1m under half space conditions using 10 dB crest factor pink noise with specified preset and corresponding EQ settings.

² Installation guidelines are specified in the SOUNDVISION software designed to help with L-ACOUSTICS® product implementation.

